



F&F Filipowski sp. j
ul. Konstytucyjowa 79/81
95-200 Pabianice POLAND
tel/fax 48 42 2270971
e-mail: fif@fif.com.pl

AS-B 220

STAIRCASE TIMERS



www.fif.com.pl

F&F products are covered by an 24 months warranty from date of purchase

PURPOSE

Staircase timer AS-B 220 serves to keep switched-ON lighting of staircase, corridor, or any other object for the set time and to switch-OFF this lighting automatically, upon elapse of this set time.

FUNCTIONING

Turned ON staircase timer supports the lighting during set time by potentiometer (from 0,5min. to 10min.). After passage of set time timer will switch OFF the lighting automatically. After switching OFF the lighting there is possibility to switch it ON again.

ATTENTION!

The AS-B 220 is adapted to co-operate with pushbuttons equipped with neon lamp.

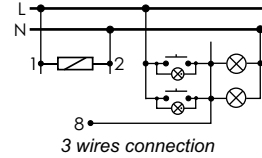
ASSEMBLY

1. Take OFF the power.
2. Put on the relay on the rail in switchgear box.
3. Connect the relay to circuitry with wiring diagram.
4. By flat screwdriver set to switching threshold.

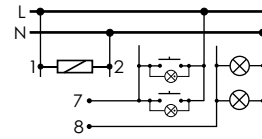
TECHNICAL DATA

supply	230V AC
current load	<16A
switching OFF delay (to set)	0,5+10min
switching ON delay	<1sec
power consumption	1,2W
connection	screw terminals 2,5mm ²
working temperature	-25+50°C
dimensions	2 modules (35mm)

WIRING DIAGRAM



3 wires connection



4 wires connection

A090405