

**ELECTRONIC BI-STABLE  
 PULSE RELAY**

**BIS-411 2Z  
 230V**

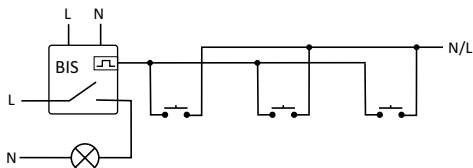
**WARRANTY.** The F&F products are covered by a warranty of the 24 months from the date of purchase. Effective only with proof of purchase. Contact your dealer or directly with us. More information how to make a complaint can be found on the website: [www.fif.com.pl/reklamacje](http://www.fif.com.pl/reklamacje)



Do not dispose of this device to a garbage bin with other unsorted waste! In accordance with the Waste Electrical and Electronic Equipment Act any household electro-waste can be turned in free of charge and in any quantity to a collection point established for this purpose, as well as to the store in the event of purchasing new equipment (as per the old for new rule, regardless of brand). Electro-waste thrown in the garbage bin or abandoned in the bosom of nature pose a threat to the environment and human health.

**PURPOSE**

Electronic bi-stable pulse relays enables the user to actuate lighting or other devices from various locations by means of control buttons in parallel connection.



- 1 -

**FUNCTIONING**

The receiver is actuated by means of a current pulse triggered by pushing any bell push connected to the relay. The receiver is deactivated by another pulse or after a preset time. The relay does not „memorize” the position of the relay contact, i.e. in case of supply voltage decay and the subsequent return of supply voltage, the relay contact will be set in the off position. Such a solution prevents the automatic actuation of the receivers controlled that might occur without proper supervision after a long-lasting decay of supply voltage.

**ASSEMBLY**

1. Turn OFF the power.
2. Put on the relay on the rail in the switchgear box.
3. Connect the power cable to joint 1-3 with accordance choosen control option the relay (control impulse L or N).
4. The timers switching which are connect in parallel connect to joint 6 and to cable which is connect to joint 3.
5. Activated receiverS connect in series to joint 7-9 and 10-12.

**ATTENTION!**

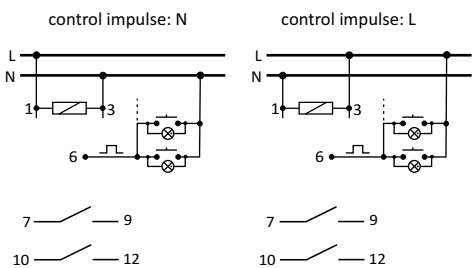
The BIS-411 2Z is compatible with bell pushes equipped with fluorescent lamps.

- 2 -

**TECHNICAL DATA**

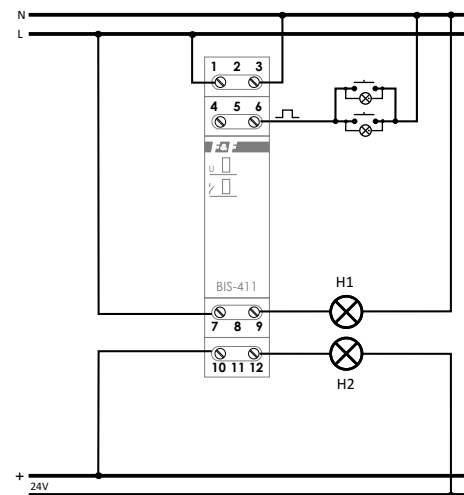
supply	230V AC
contact	separated 2NO
current load	2x<8A]
controlling current	<1mA
activation delay	0,1÷0,2s
signalling of supply	green LED
signalling of activation	red LED
power consumption	0,8W
connection	screw terminals 2,5mm <sup>2</sup>
working temperature	-25÷50°C
dimensions	1 module (18mm)
fixing	on the rail TH-35

**WIRING DIAGRAM**



- 3 -

**Connection with N pulse control (example)**



D141030

- 4 -