



F&F Filipowski sp. j  
ul. Konstytucyjowa 79/81  
95-200 Pabianice, POLAND  
tel/fax 48 42 2270974  
e-mail: fif@fif.com.pl

## ZI-1

### STABILISED POWER SUPPLY pulse



www.fif.com.pl

F&F products are covered by an 24 months warranty from date of purchase

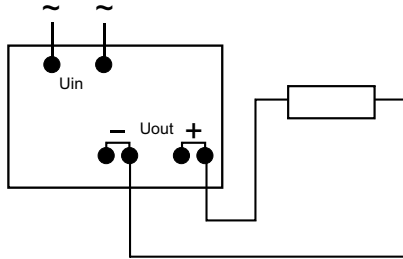
#### PURPOSE

ZI is used to supply electrical and electronic equipment with an average power consumption, which require stable, filtered voltage independent of circuit voltage changes.

#### FUNCTIONING

If a power supply falls below 160V then supplier will continue to stabilize output voltage., but the maximum output current will decrease concurrent with the decline voltage cord. Due to the high frequency converter, some very sensitive radio or microprocessor can operate wrong. It is recommended that you install an additional filter (consisting of a choke current compensated for inductivity 2x5-15mH and a capacitor  $C = 0.33-1\mu F$ ) between power supply and receiver.

#### WIRING DIAGRAM



With increasing load above  $I_{max}$  supplier will stabilize the current, and output voltage. will decrease. If a output voltage falls to about 40% of the power supply is switched off and will be a 1.5-2s sample. Similarly happens when connecting the receiver, who receives a large current boot (e.g.the cold light bulb). If you're experiencing is not too large, the power supply after a few attempts (eg, the gradual warming-up, the light bulb filaments) runs. If the load is too large to sample the power supply will disconnect the load moment.

#### ASSEMBLY

1. Take OFF the power.
2. Power cable connect to input joints..
3. Receiver connet to output joints with marked polarity.

#### TECHNICAL DATA

input voltage  $U_{in}$  85 - 264V, 50 - 60Hz

output voltage 5V DC

output power 50W

output current 10A

keying frequency 70kHz

current limitation  $I_{max}=110\%$  of output current

minimal load 0%

working temperature  $-10+60^{\circ}C$

weight 190g

connection screw terminals 2,5mm<sup>2</sup>

dimensions 6 modules (105mm)

fixing on rail TH-35