



F&F Filipowski L.P.  
Konstantynowska 79/81, 95-200 Pabianice, POLAND  
phone/fax (+48 42) 215 23 83 / (+48 42) 227 09 71  
www.fif.com.pl; e-mail: biuro@fif.com.pl

## **WZE-3 RST**

Electricity  
consumption meter,  
3-phase, resetable



**Do not dispose of this device in the trash along with other waste!**

According to the Law on Waste, electro coming from households free of charge and can give any amount to up to that end point of collection, as well as to store the occasion of the purchase of new equipment (in accordance with the principle of old-for-new, regardless of brand). Electro thrown in the trash or abandoned in nature, pose a threat to the environment and human health.



### **Purpose**

The WZE-3 RST is a 3-phase, 4-wire energy consumption indicator equipped with an additional, resetable energy meter.

### **Functioning**

A special electronic system under the influence of current flow and applied voltage in each phase, generates pulses in proportion to the electricity consumed in this phase. The sum of the pulses of the three phases is indicated by a flashing LED shall be converted to energy, taken throughout the three-phase system, and its value is determined by the segment LCD display. The digits after the decimal point represent hundredths (0.01 kWh = 10 Wh).

The indicator is equipped with a 1-row LCD display for displaying total energy consumption, or energy consumption since the last meter reset. The value of the resetable meter is symbolized on the indicator by displaying the [r] sign on the first segment of the display.

To switch between the display of the resetable and total meter, briefly press the button located on the front. To return to the total energy meter, briefly press the button on the front again.



To switch, do not hold down the button because this will reset the auxiliary counter to zero.

---

### Auxiliary counter reset

The device is equipped with an resetable auxiliary energy meter. To reset the counter value, go to the resetable counter reading, then press and hold the button on the front of the device for about 5 seconds. This will cause the auxiliary counter to return to the initial value setting (0000000.0), while not changing the indication of the total counter

### Measured values

Active energy consumed

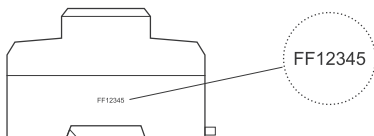
[kWh]

### Pulse output

The indicator has a SO+ SO- pulse output. This allows you to connect another pulse device (SO) that reads impulses generated by the meter. No additional device is required for the correct operation of the meter.

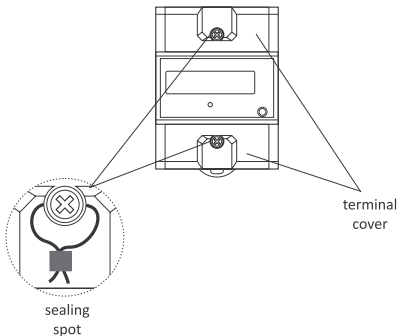
## Number of the meter

The meter is marked with an individual factory number to enable its unambiguous identification. The marking is indelible (laser engraving).

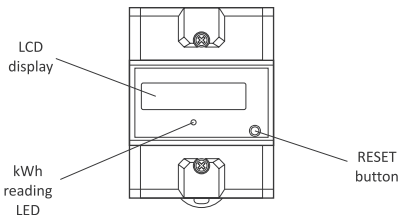


## Sealing

The meter has the option of sealing the input and output terminals, preventing the meter from being bypassed.



## Front description



## Mounting

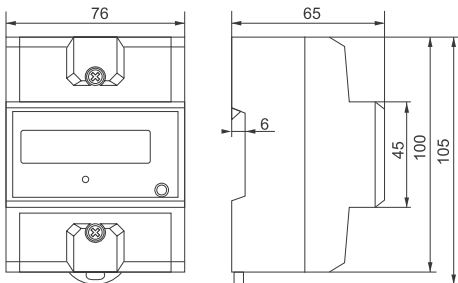
1. Disconnect power supply.
2. Mount meter on a rail in distribution box.
3. Open terminal covers.
4. Connect the power supply to the terminals 1 (L1 IN), 3 (L2 IN), 5 (L3 IN).
5. Connect the circuit to be measured or a single receiver to the terminals 2 (L1 OUT), 4 (L2 OUT), 6 (L3 OUT).
6. N-wire connect to terminal 7.
7. Additional pulse receiver connected to terminals 20(+) – 21(–).  
The terminals are located under the top shell meter terminals.



Additional pulse receiver is not required.

8. Put the meter terminals covers.

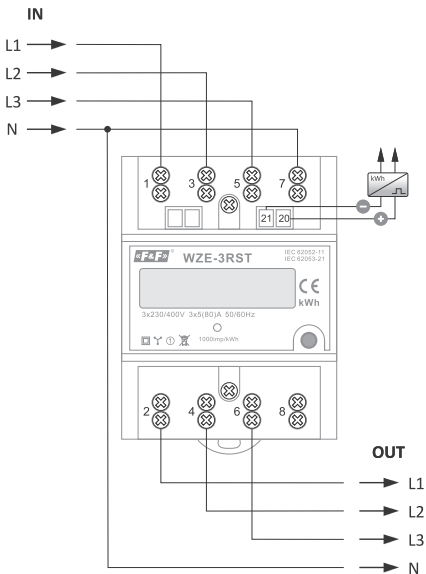
## Dimensions



## Terminals description

- |         |                             |
|---------|-----------------------------|
| 1, 3, 5 | – L1, L2, L3 (power supply) |
| 2, 4, 6 | – L1, L2, L3 (reception)    |
| 7       | – neutral wire (input)      |
| 8       | – neutral wire N (output)   |
|         | <b>⚠ max. 80 A !</b>        |
| 20      | – pulse output (+)          |
| 21      | – pulse output (–)          |

## Wiring diagram



## Technical data

instalation	3-phase, 4-wire
reference voltage	3×230/400 V
minimum detection current	0.02 A
base current	3×5 A
maximum current	3×80 A
voltage measurement range	160÷265 V
accuracy class (IEC62052-11 i IEC62053-21)	1st class
rated frequency	50 Hz
insulation protection class	II
housing	ABS material
energy consumption of the meter	<8 VA; <0.4 W
indication range	0÷999999.99 kWh
meter constatnt	1000 pulses/kWh
readout indication	red LED
pulse output	
type	open collector
voltage maximum	27 V DC
current maximum	20 mA
pulse constant	1000 pulses/kWh
pulse time	35 ms
working temperature	-40÷70°C
terminal	16 mm <sup>2</sup> screw terminals
dimensions	4.5 modules (75 mm)
mounting	on TH-35 rail
ingress protection	(indoors) IP51

## Warranty

F&F products are covered by a 24-month warranty from the date of purchase. The warranty is only valid with proof of purchase. Contact your dealer or contact us directly.

## CE declaration

F&F Filipowski L.P. declares that the device is in conformity with the essential requirements of the Low Voltage Directive (LVD) 2014/35/EU and the Electromagnetic Compatibility (EMC) Directive 2014/30/UE.

The CE Declaration of Conformity, along with the references to the standards in relation to which conformity is declared, can be found at [www.fif.com.pl](http://www.fif.com.pl) from the product subpage.