



ul. Konstytucyjna 79/81
95-200 Pabianice
tel/fax 48 42 2270971 POLAND
e-mail: fif@fif.com.pl

RT-820 TEMPERATURE REGULATOR

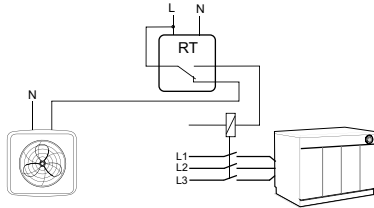


www.fif.com.pl

F&F products are covered by a 24 months warranty from date of purchase

PURPOSE

Temperature regulators may be used for equipment control in anti-freeze systems which prevent the freezing of gutters, the accumulation of ice on stairs, vehicles, etc.



FUNCTIONING

The power supply to the generator is signalize by shine of green LED. Until the required ambient temperature is achieved, the contact of the regulator remains in position 2-1 and the heating device is active. Once the set value is achieved, the contact shifts into position 2-8 and the heating or ventilation device is turned off. Any drop in temperature by the hysteresis value will activate the heating device again (contacts 2-1 closed) until the set temperature value is achieved.

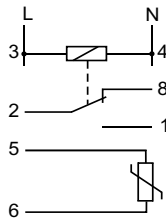
ASSEMBLY

1. Take OFF the power.
2. Put regulator on the rail in the switchgearbox
3. Connect to system with wiring diagram.
4. Probe of temperature put in the measurement place and connect to regulator. Need to care for heating or cooling device near place where is install probe. When is need, possible is continue probe cvable to 10m. But when lenght of cable is longer than 10m than will arrive errors in work of relay.
5. By potentiometer "temperature" set ordered temperature value.
6. By potentiometer "hysteresis" set ordered hysteresis

TECHNICAL DATA

supply	230V AC
current load	<16A
joint	separated 1P
range of regulation temperature	4+30°C
hysteresis setting range	0,5+3°C
temperature sensor	KTY 10-6
length of probe cable	2,5m
supply siganalisation	LED Green
operation mode	LED Red
power consumption	1,1W
working temperature	-20+50°C
terminal	screw terminals 2,5mm ²
dimensions	2 modules (35mm)
fixing	on rail TH-35

WIRING DIAGRAM



A090705